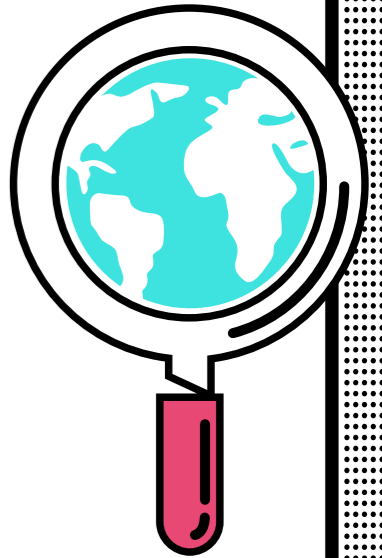
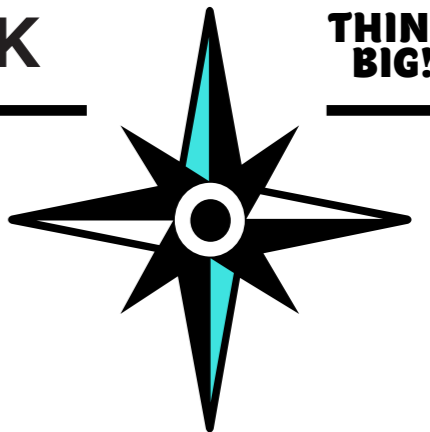




20
26



THINK
BIG!



STUDENT GUIDE BOOK

Guide Book for KVCD Students



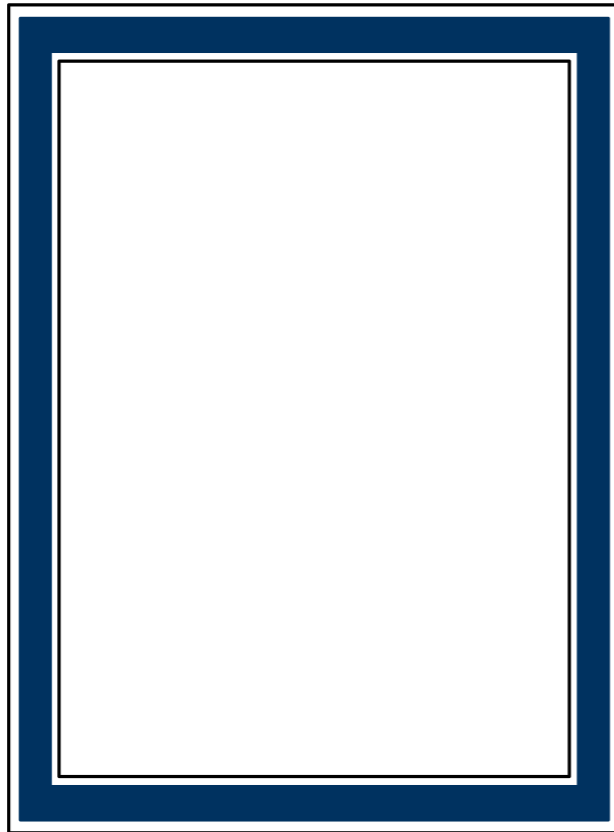
Blue Book covers academic information, administrative procedures, code of conduct for students and basic regulations from which you are advised necessarily as a student of the Department of Visual Communication Design. If you have any inquiry, please contact to Blue Book Publishing Committee (053-620-2383)

KEIMYUNG
UNIVERSITY

FINE ARTS
COLLEGE

VISUAL
COMMUNICATION
DESIGN
DEPARTMENT





“TABULA LASA”

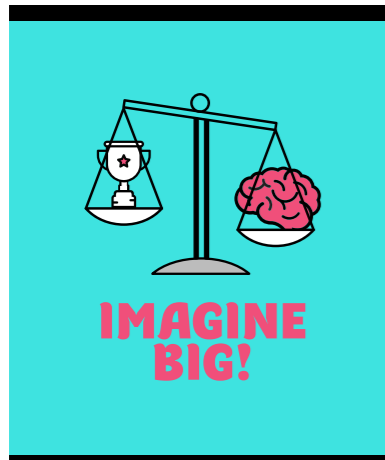
Until we have a distinct face of our own

We seem to have to celebrate several more jubilees before
we can form our true nature and destiny.

Until then, until we have a distinct face of our own,
we will keep the portrait painting blank as it is today,
"Tabula Rasa," a blank slate.



1

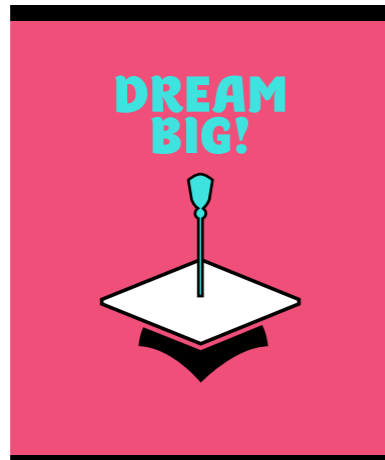


ABOUT DEPARTMENT

Fine Arts College	10
About KVCD	11



2



ACADEMIC AFFAIRS

Credit System	14
Curriculum	15
Graduation Requirements	16
Academic System	17



3



STUDY GUIDE

Counseling	26
Career Program	27
Volunteering Scholarship	28
Intellectual Property Rights	29
Student Union	30

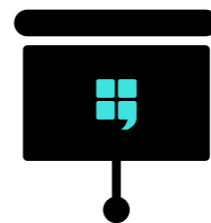


4

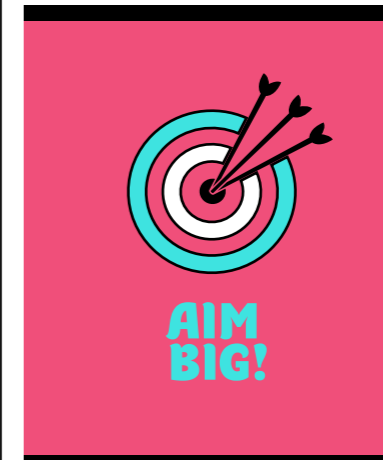


CAMPUS LIFE

Faculty Facilities	34
Department Equipments	35
Certificate Issuance	36
Public Transpot & Parking	37
Disaster Evacuation	38



5



USEFUL INFORMATION

How To Graduate Easily	42
Contacts	44



6



POLICY & REGULATION

Policy & Regulation	48
Academic Calendar	50





**IMAGINE
BIG!**

About Department



10

Fine Arts College

11

Visual Communication Design dept.



FINE ARTS COLLEGE

Fine Arts College started as the Department of Fine Arts and Crafts in 1964 and was promoted to the Department of Fine Arts at the University of Arts in 1972 and the College of Fine Arts in 1981 to this day. The educational goal is to improve the quality of life through realization of human aesthetic needs and creation of the aesthetic world, and to cultivate artists with rich aesthetic sensitivity, rational thinking, and excellent artistic creativity through a systematic and scientific curriculum. Fine Arts college is also famous for its long tradition and competent faculty, helping students build their own world by cultivating their own qualities and abilities as much as possible. It has produced a number of leading alumni.

Hi ~~
Everyone!



Yun Hee Kim Dean



VISUAL COMMUNICATION DESIGN dept.

The Department of Visual Design covers the various theories and practices that are required in the field and offers a wide range of education from aesthetic and economic perspectives to the use of traditional media and various new media. To be able to produce a well-educated designer, who can adapt to the era of globalization, we invite foreign professors and participate actively in programs such as abroad design exhibitions and seminars. Additionally, to meet the fast-changing needs of the society through an active exchange of various academic fields and convergence and to train a designer who can assume the role as a creative and proactive leader in the 21st-century design industry.

Gonna be
tough year!



Sang-man Han Course Director

Educational Objectives

Fostering intellectuals with moral character and artistic sensibility

Fostering creative problem-solving artists

Fostering creative professionals with a sense of international culture



College of Fine Arts Departments

Painting	Craft Design	Industrial Design	Fashion Design	Textile Design
Fashion Marketin	Photography and Related Media	Video and Animation	Visual Communication Design	Webtoon Design

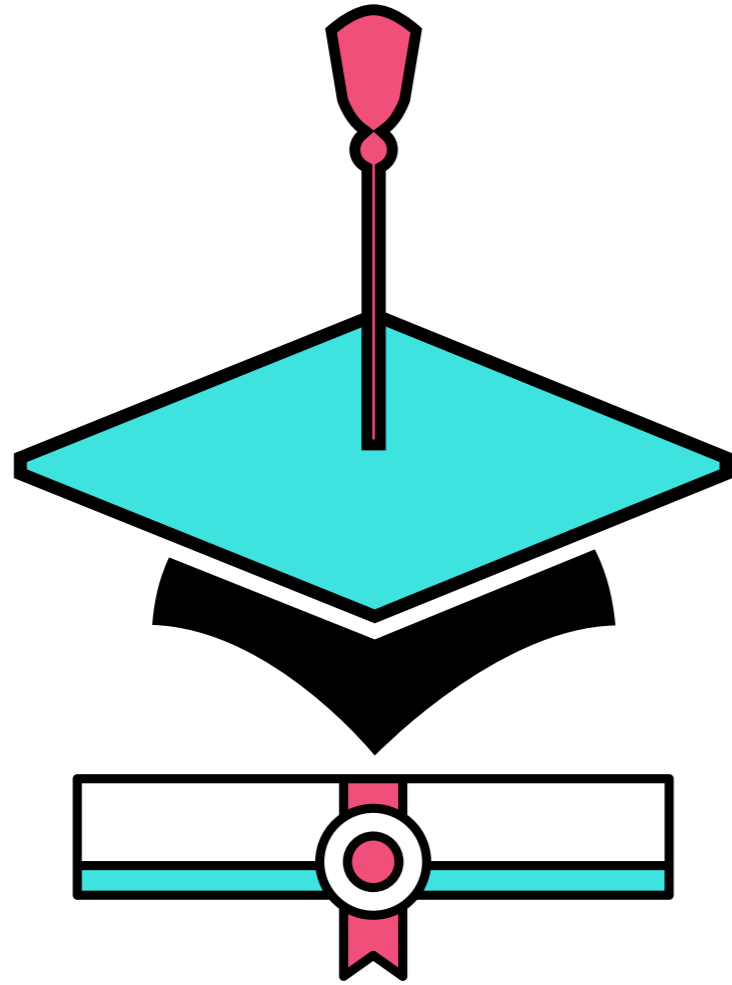


department logo



Brief History

- 1964. 03 Established as Applied Arts Major in Arts & Craft dept.
- 1965. 09 Professor Kim, Kwang Hyun Appointed
- 1967. 09 Professor Shin, Jisiik Appointed
- 1969. 03 Renamed as Applied Arts Department
- 1980. 03 Professor Kim, Ki Han Appointed
- 1980. 03 Professor Bae, In Ho Appointed
- 1985. 03 Professor Nam, Keum Woo Appointed
- 1995. 03 Professor Bae, Hong Kwan Appointed
- 1996. 03 Renamed as Visual Communication Design Department
- 2005. 03 Professor Hwang, Hyun Taik Appointed
- 2006. 09 Professor Han, Sang-man Appointed
- 2008. 03 Professor Rheem, Hun Woo Appointed
- 2018. 03 Professor Hitomi Sakabe Appointed
- Professor Lee, Keun Hyung Appointed
- 2022. 03 Professor Jang, Sun Kyu Appointed



**DREAM
BIG!**

Academic Affairs



<u>14</u>	Credit System
<u>15</u>	Curriculum
<u>16</u>	Graduation Requirements
<u>17</u>	Academic System



CREDIT SYSTEM



Until the new students in 2023

Course Division	Course type	Credit Hours	Credit	Courses	Year of Study
Liberal Studies	General Education Requirement	12	0 - 3	Chapel (1), Chape II(2) - (0 credit) Designing University Life & Career(1 credit) Basic Writing (3 Credits) Liberal Arts Seminar (3 Credits), Understanding of Christianity (2 Credits) Keimyung Spirit (2 Credits) Communication English (2 Credits) Academic English (2 Credits) Global Citizenship (1 credit)	1st Year
	Balanced Liberal Studies	15	3	Phiosophy and History, Society & Culture, Science & Tecnnology Literature and Art, Global Leadership, Career Exploration / Personal Development (5 disciplinary ares with coursees need to be selected)	1-4 Years
	General Education Electives	0 or more	3	Introduction to Life Long Education, Military Science, Foreign Exchange Students, Virtual Classes, General Languages, Informationalization, Start-Up Course, etc.	2-4 Years
Major	Major Basic	0~30	3	0 ~ 12 Credits	1st Year
	Major compulsory	More than 69 (Include Major, More than 54 credits)	0 - 3	Major, More than 54 credits Include other major more than 69 credits	1-4 Years
	Major Electives		1 - 3	Major Electives	2-4 Years
Teaching Profession	22	Required If Applicable			
Total	130	Common Liberal Studies 15 credits + Balanced Liberal Studies 15 credits + Major Basic 30 credits + Major Compulsory more than 69 credits			

From the new students in 2024 : Total 130 credits



- Credits are set for each course. If you do not receive a passing grade, you will not be receiving any credit hours for the particular course.
- **P (pass) Credits** : No credits are given for the chapels and graduation thesis, but you must receive a passing grade (p grade) in order to graduate.
 - **1 Credit** : 1 hour of theoretical week or 2 hours of experiment, practicum, or practical course per week during the first semester (16 weeks)
 - **2 Credits** : 2 hour of theoretical week or 4 hours of experiment, practicum, or practical course per week during the first semester (16 weeks)
 - **3 Credits** : 3 hour of theoretical week or 6 hours of experiment, practicum, or practical course per week during the first semester (16 weeks)



CURRICULUM



	Spring Semester	Fall Semester
1 1st year	<ul style="list-style-type: none"> Basic Practice Creative Design Designing university life and career Visual Arts and Culture Design Thinking Digital Basic Expression (1) 	<ul style="list-style-type: none"> Digital Graphics 1 Photographic Image Design Digital Design Digital Basic Expression (2) Theory of Modern Design Visual Expression Practice
2 2nd year	<ul style="list-style-type: none"> History of Graphic Design Fundamental Typography Graphic Expression Practice Global Design Research Basic Illustration Illustration (1) Graphic Design & Media 	<ul style="list-style-type: none"> Theory of Visual Communication Design Midea Contents Planning Illustration (2) Color Design Typography(2) Illustration(2) Color In Design Design Methodology and Process Generative Ai Graphics
3 3rd year	<ul style="list-style-type: none"> Logic and Logical Explanation of Art Editorial Design Information Design Branding And Identity(1) Experience Design Character Contents Design (English) 	<ul style="list-style-type: none"> Theory of Design-Craft Advertising Design Motion Graphic Design Ui / Ux Design Branding And Identity(2) Typeface Design(2) Editorial Design(2) Visual Communication Design Program Development Advertising Design & Public Campaign Concept Service Based AI-UX
	Visual Communication Design Convergence And Practice	
4 4th year	<ul style="list-style-type: none"> Subject Specialization & Teaching Methods In Design-craft Package Design (1) Typeface Design (1) Publication Design (1) Visual Design Business Studio Digital Design Practice Service Product Design 	<ul style="list-style-type: none"> Career Portfolio Package Design (2) Publication Design (2) Visual Capstone Design Publication Design Practice Design For Digital Media
	Graduation Thesis	
0 year	<ul style="list-style-type: none"> Visual Communication Design Project Fundamental Moving Image Startup Field Training (1) Startup Field Training (2) Longterm Startup Field Training Field Placement (1) Field Placement (2) Field Placement (3) Full-Semester Field Placement Field Placement (4) 	



GRADUATION REQUIREMENTS

Graduation Obligation

To Be eligible for a BA degree, you must achieve a total of **130 credits**, go through 8 semesters for 4 years, 2 semesters per year. You must participate **Graduation Exhibition** and take **Graduation Dissertation** course during the 4th year study.

Attendance

The grades of courses that are absent in excess of **1/3** of the class time lead to **failure (F)**. late for the class twice are regarded as one absent. If the attendance score is failure, You can never achieve the course credit.



Graduation Exhibition Rule


- 1 Students must participate in Graduation Exhibition.
- 2 Only 4th year students can participate in Graduation Assessment and Exhibition, Graduation Exhibition will be held in October every year, the dates may change depending on the situation.
- 3 To participate Graduation Exhibition, you must achieve following 3 courses. Branding & Identity / UI, UX Design / Editorial Design (3rd year)
- 4 If you away due to sickness or accident you should notify your professor, get refund fee and give up Graduation Exhibition.
- 5 Graduation Assessment will be held 3 times, If you fail to pass, You must be instructed by a designated professor to be reassessed.
- 6 It is possible to produce graduation works while on time out, you can only participate graduation exhibition during in course.



ACADEMIC SYSTEM


Course Pack

You can pre-select and save courses to take before enrollment. Courses stored in the course pack can be enrolled by simply entering the code on the day of the course registration.

 EDWARD System >> Academic Administration >> Course >> Management of Enrolmen >> Apply Course package


Course Enrolment

During Course enrolment period, log-in to <http://sugang.kmu.ac.kr>, after entering the course registration confirmation number, log-in to <http://portal.kmu.ac.kr>, You can check the registration details.

 EDWARD System >> Academic Administration >> Course >> Course Registration Management >> Lecture time

Course change

During Course change period, Select the course you want to cancel, Enter the course number you want to enroll and reapply.

 EDWARD System >> Academic Administration >> Course >> Course Registration Management >> Lecture Time Table Change

Credit Rating

Attendance : 20 ~ 30%

Assignment, Presentation : 20 ~ 30%

Assessment : 50 ~ 70%

The grades of the practicum courses can be evaluated in different way.




Objection to Grade

During Grade Correction period, you can personally appeal to your professor, but it is very hard to be changed unless the professor does mistake.

Academic Affairs Team ☎ 580-6063
Sung Soe campus main bldg. # 104



Time out & Return

 EDWARD System >> Academic Administration >> Register >> Register Change Management >> Register Change Apply

Failures and Exclusion

If any of the following college rules apply to you, you may be subject to failure or exclusion from the course.

- ▶ Student who get **Academic Score Warning*** for 3 straight semesters during in the course.
- ▶ Students who has no prospects of academic achievement due to sickness.
- ▶ Student who does not enroll after expiration of time out or hand in application for extension of time out.
- ▶ Student who does not enroll during the period.
- ▶ Student who enroll in other college.
- ▶ Students who fails due to disciplinary reasons


Overseas Study

As a student majoring in arts, experiencing a cross-cultural culture is a very important opportunity to cultivate an understanding of the difference, a deep eye, and an expanded perspective. After applying for the training program, it is necessary to go through the selection process and participate. The overseas training project is held for two weeks and is usually announced in May.

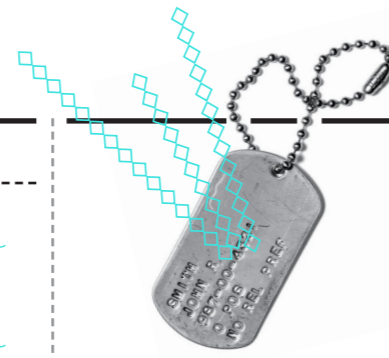


Issuance of Transcripts

If you want to get a transcript, your academic record, you can get it in the following way.

 EDWARD System >> Academic Administration >> Certificate >> Certificate Management >> Certificate Apply

or you can visit Administration Team in College office to get issued.



Academic Score Warning*

If the average grade score is less than 1.50 for a year. But the grades of the last semester are excluded.

Government Education Support Projects

We have been consistently participating in the financial support projects of the government, especially the NURI, which was conducted from 2004 to 2009 and CK-1, from 2015 to 2018, now the LINC (Leaders INdustry-University Cooperation)



What a benefit!



The LINC project is a project to transform universities into industry-university partnerships and to support the activation of industry-university cooperation activities through the training of customized talents and corporate support.

Benefits from LINC Project

Industry-academia cooperation projects, specialized talent training programs, entrepreneurship education programs, Employment support programs, interdisciplinary study program

* Linkage Major operated by LINC Team : Cultural Contents Linkage Major (See Linkage Major information below)

☎ 580 - 6796, 6799

Eligibility : Artech College students

For further information, visit website <http://linc.kmu.ac.kr/html/>



Linkage Major in Visual Communication Design Dept.

Linkage Majors in Visual Communication Design Dept. are **Media Content Linkage Major** operated by Convergence Media Content Specialization Project team and **Cultural Contents Linkage Major** operated by LINC Project team.

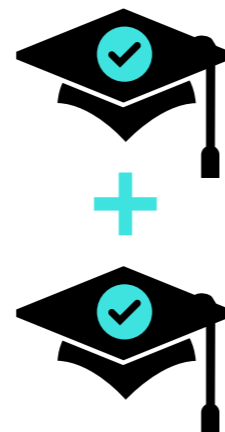
▶ What is Linkage Major?

The curriculum is run in conjunction with two or more majors in the departments. If the majors are fulfilled, students can earn additional degrees in addition to their first majors. At least 42 credits will be awarded to students who majored in a linkage major. If you achieve a minimum of 21 credits in a minor, you will receive an another degree. In addition to the first major, you can apply for a second major or a third major, and you can not graduate with a major in a Linkage major.

▶ How to achieve Linkage Major?

Dual major: 42 credits achieved

In the case that the courses included in the curriculum of the linking major are the same as those of the first major, they can be recognized as duplicate credits within 9 credits and the remaining 33 credits Students must take courses designated by the department concerned.



Minor major : 21 credits achieved

In case that the subjects included in the curriculum of the major course are the same as the subjects of the first major, they can be recognized as double credits within the 6 credits and the remaining 15 credits are awarded to Students must complete a major course in conjunction with the department.

* Media Content Linkage Major only accept dual minor major.

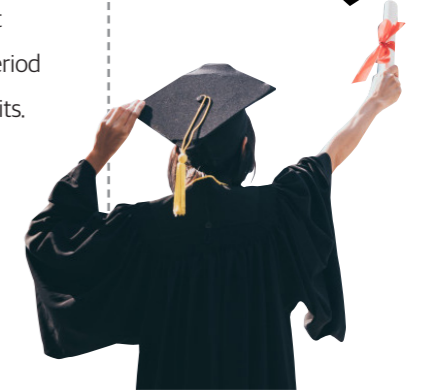
▶ How to apply Linkage Major Achievement Approval

A student who apply for a linkage major (dual major or minor major) must submit an application for approval in Edward Potal within the specified period (during March or September) after the completion of the graduation credits.

▶ Linkage Major Benefit

If you meet the requirements of linkage Major, the linkage major is stipulated in the certificate together with the first major.

Great Opportunity!



▶ Media Content Linkage Major

operated by Convergence Media Content Specialization Project team

● Linkage Major Degree Name

Media Contents (Bachelor of Art)

● Participating Departments

5 departments in Artech College

● Summary of Major & Educational Courses

As a part of the CK-1, this linkage major is a joint curriculum plan operated by the KFMF Creation Talent Promotion Project. It aims to nurture competent manpower in the field of media contents .

● Media Content Linkage Major objectives

Based on integrated thinking and creativity, the five departments selected based on the efficiency and expectation effect of interdisciplinary research will gather together to promote understanding of media contents through interdisciplinary education, and promote employment, career.

● Media Content Linkage Major Mission

1. Cultivate creative talents that will lead cooperative values and media convergence environment.
2. Cultivate professionals who create a new cultural value and have artistic literacy and humanities knowledge.
3. Cultivating media culture frontier leading ethical responsibility and knowledge content production.



▶ **Linkage Major** operated by LINC team

● **Linkage Major Degree Name**

Cutural Contents Linkage Major (Bachelor of Art)

● **Participating Departments**

5 departments in Artech College

* Cutural Contents Linkage Major Curriculum - Visit LINC team website

Cutural Contents Linkage Major achieved - LINC scholarship priority

Linkage major with dual major - 30 mileage,

Linkage major with minor major - 20 mileage accumulated each semester.

* Only for students who applied in advance, If you want to apply,

LINC team website → Linkage Major → Linkage Major Apply in advance

For those who applied dual major course, if they achieved more than

2 other major courses, will be given 30 mileage points.

(Basic mileage will be deduced when apply less than 1 course)

Priority selection for program participants in LINC project

▶ Kyung Sun Kim **T** 580-6798 **E** sunny1024@kmu.ac.kr

Keimyung University Industry-academia cooperation bldg. # 301

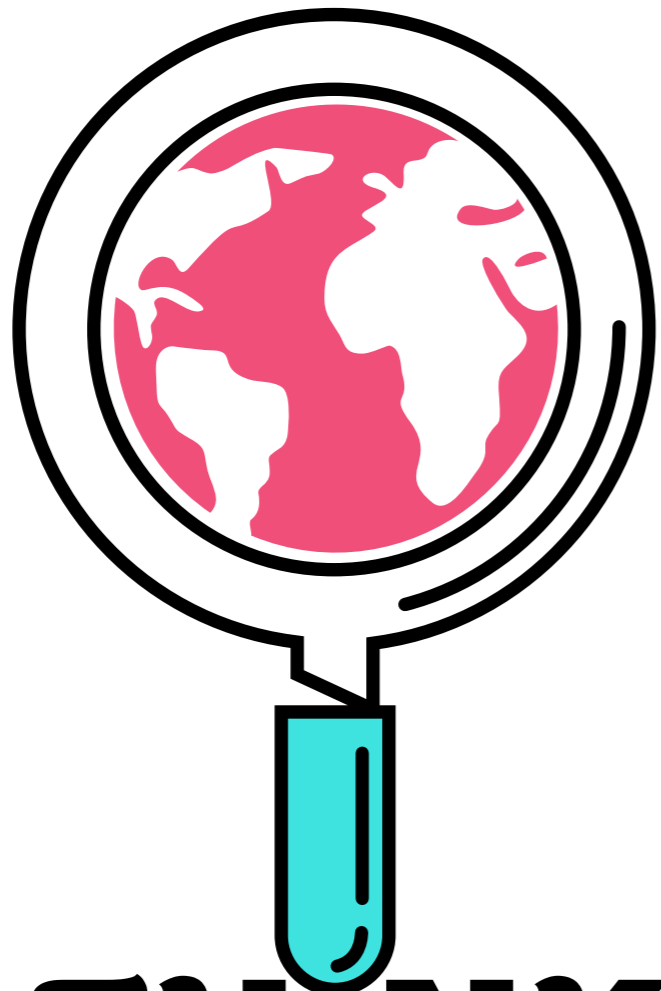


Media Contents Linkage Major Basic & Core Courses

	Course	Semester		
Basic	MEDIA CONTENTS: BASIC APPLICATIONS	1 / 1	Major Basic (compulsory)	Practicum
	UNDERSTANDING MEDIA-CONTENTS	1 / 2	Major Basic (compulsory)	Theory
	MEDIA LITERACY	1 / 1	Liberal Arts	Theory
Core	MEDIA CONTENTS PLANNING	2 / 2	Major compulsory	Practicum
	MEDIA CREATION STUDIO	3 / 1	Major compulsory	Practicum
	MEDIA CONTENTS PROJECT	3 / 2	Major compulsory	Practicum

Media Contents Linkage Major Curriculum

Department	Course Code	Course	Semester	Credits	
Creative Writing Department	32762	DRAMA CREATION BASIC	2 / 1	3	Lecture
	32765	WRITING AND UNDERSTANDING OF THE SCRIPT	2 / 1	3	Lecture
	21122	WRITING FOR MEDIA	0 / 5	3	Lecture
	32226	UNDERSTANDING AND PRACTICE OF STORYTELLING	3 / 1	3	Lecture
	32764	UNDERSTANDING MEDIA HISTORY	3 / 2	3	Lecture
Music Production Department	25301	STUDY OF MUSIC STYLE 1	1 / 1	2	Practicum
	23176	CRITICAL LISTENING	2 / 1	2	Practicum
	26852	MUSIC HISTORY	2 / 2	2	Lecture
	26853	VISUAL SOUND DESIGN 1	3 / 2	2	Practicum
	33827	PSYCHOLOGICAL ARTS ENGINEERING	2 / 2	2	Practicum
Visual Communication Design Department	30573	FUNDAMENTAL TYPOGRAPHY	2 / 1	3	Practicum
	20873	BASIC PRACTICE	1 / 1	3	Practicum
	26800	CREATIVE DESIGN	1 / 1	3	Practicum
	신규	COLOR DESIGN	2 / 2	3	Practicum
	신규	ILLUSTRATION 2	2 / 2	3	Practicum
Photography and Related Media Department	17709	COLOR PHOTOGRAPHY	1 / 2	3	Practicum
	28307	PHOTOGRAPHIC TECHNIQUE	2 / 1	3	Practicum
	28198	DIGITAL IMAGING	2 / 2	3	Practicum
	21479	EDITORIAL PHOTOGRAPHY	3 / 1	3	Practicum
	26774	DIGITAL IMAGE	3 / 2	3	Practicum
Video and Animation Department	33325	FUNDAMENTAL 3D GRAPHIC	1 / 2	3	Practicum
	26816	FUNDAMENTAL& DIGITAL ANIMATION	2 / 1	3	Practicum
	30574	FUNDAMENTAL DIGITAL ANIMATION	2 / 1	3	Practicum
	26823	VIDEO & AUDIO WORKSHOP	2 / 2	3	Practicum
	33760	SCREEN DESIGN WORKSHOP	2 / 1	3	Practicum



**THINK
BIG!**

Study Guide

3


<u>26</u>	Counseling
<u>27</u>	Career Program
<u>28</u>	Volunteering Scholarship
<u>29</u>	Intellectual Property Rights
<u>30</u>	Student Union



COUNSELING


Application procedure

If you have difficulties such as study, career, school life, military service, relationship, time out, You can ask for counseling :

 EDWARD System >> Academic Administration >> Counseling >> Integrated Application for Counseling >> Academic Advisor

Academic Advisor

When you enroll Keimyung University, academic advisor will be assigned to you and can find on the EDWARD system.

 EDWARD System >> Academic Administration >> College Register >> Personal Information >> Academic Advisor

Academic Difficulties

See your academic advisor or visiting the Student Counseling Center

Student Counseling Center (Park Kyung Ok : 580 - 5811)

Academic Counseling  580 - 6300 Psychological Test  580 - 5745


Counseling for Individual/Group  580 - 5743

Educational Support  580 - 5744

#1125, 1st floor of Bauer Hall in Seongseo Campus

Health and Counseling

free physical checkup service on an annual basis to help students to find disease in advance - Period of Application : Mid of March

 EDWARD System >> Academic Administration >> Student Support >> Student Health Examination >> Academic Advisor

Sexual Harassment Counseling

Providing appropriate education and counseling services for coping with and overcome the damage from sexual harrassment and violence and for continuing healthy life

B1 100, Dae Myung Campus Main Bldg.



CAREER PROGRAM

Confirmation / Attendance for Early Employment

we systematically operate a variety of programs for successful employment, and business start-ups, and career path.

Eligibility : A student who gets a job during the graduating semester

Acknowledgement of Attendance

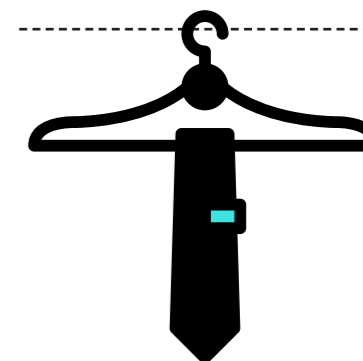
- 1) The total period of employment confirmed as early employment during the graduating semester
- 2) Including the period of employment by transfer

Process of Acknowledgement and Attendance

- 1) Confirmation of employment
 - Application for confirmation of early employment (within 2 weeks from the date of employment)
 - Confirmation of early employment (by the Employment Support Team)
 - Printing out the certificate of early employment (within 1 week from confirmation)
 - Submit the certificate to course professor (within 2 weeks from the date of employment)

Supporting Document

The Employment Support Team will verify supporting document for confirmation of employment and acknowledgement of attendance, and the student will print out the relevent certificate and submit it to the course professor.






VOLUNTEERING SCHOLARSHIP

How To Apply for Volunteering Scholarship

It is a system that gives a tuition waiver to students who volunteer at the department office for 50 hours.

 EDWARD System >> Academic Administration >> Scholarship >> Apply for Scholarship

Print out application form and submit to administration office

Application Period : Notified on Kakao Talk chat room every year.

Eligibility : A student belong to within the 8tn income class as a result of examination for provision of national scholarship.

A student has not applied for national scholarship will be exclude from the eligibility for volunteering scholarship.

A tuition waiver is provided when a student receives a volunteering scholarship. No separate scholarship notice will be sent to the student. Volunteering scholarship will have to perform some basic department related duties, such as answering phone clean the office.

* In the case of non-fulfillment of 50-hours voluntary activity, the student will be excluded from subsequent semester applying and return the amount of scholarship that has been received.



COURSE WORK EXHIBITION

Course Work Exhibition can be organized if it is necessary according to the judgment of course professor in suitable space for a fixed period of time. It is the principle that the students prepare for the works to be exhibited at the exhibition and necessary items during the exhibition, but if necessary, consult with the teaching assistant or the course professor.



INTELLECTUAL PROPERTY RIGHTS

Copyright Protection

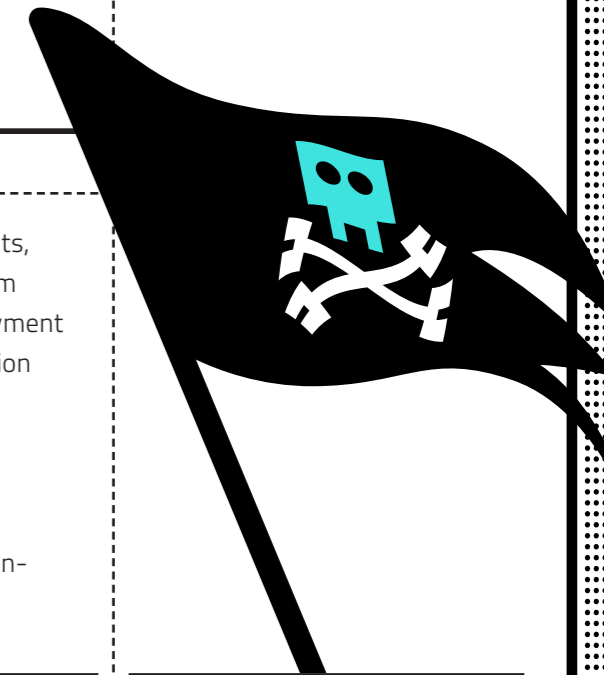
The copyright of the the students belong to the student. Students, professors and department can not use without permission from the copyright owner. For nonprofit purposes for student employment and departmental introduction, It can be used after get permission from the copyright owner.

No infringement : Infringement of intellectual property rights is limited by law and punishment in violation.

Protection : Protection covers sounds, music, images, texts, etc., regardless of whether it is for profit / non-profit, education / non-educational purpose.

Protection of personal property

Student's personal property and property must be protected, and the obligation lies with the owner. It is important to prevent the loss, damage, and theft of own property, and the responsibility for it is also to the owner. CCTV is installed in the entire classroom, take follow-up promptly if an incident occurs.



COMPASS K

Developed to enhancing learning capability and competitiveness in employment of current students. Consisting of 7 sectors: objectives management, major, globalization, IT, volunteering, creativity, career and employment. Classified student's learning capability into 18 items to be managed.





STUDENT UNION

College Student Union

Organize and lead all events on campus, identify and resolve students' suggestions.

Selection

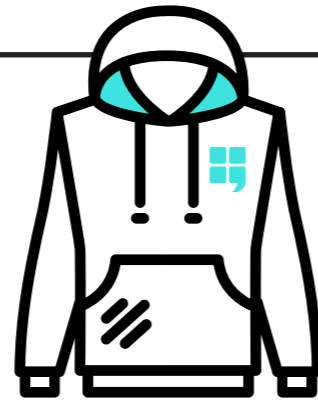
- One month notice for candidate registration need to be given for replacement or additional selection of student chairman or student union members
- Candidates for the chairman, vice-chairman, manager and secretary are recommended to register from February to March.
- Student representatives and assistant student representatives are selected on a year basis. (For freshmen, student representatives can be appointed by recommendation of senior or academic advisor)



Department Student Union

Role of Department Student Union

To support academic affairs of students, collect suggestions, closely communicate with student union and to play a role of channel for communication with professors association in department and plan and conduct department events.

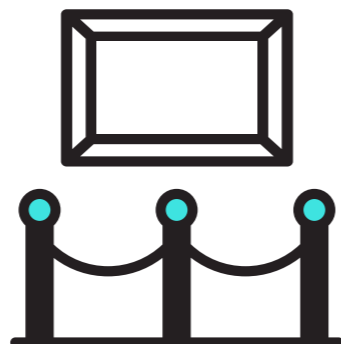


Graduation Preparation Committee

Selection : More than one student by recommendation of professors. Give priority to volunteer students. Consists of 6 or more students through selection and recommendation. The chair of the Preparatory Committee is determined by the votes of the professors and students.

Activity : The chairman discusses with the students to form a team of two or more share work. Each team share their work and upload their progress daily.

Company visits and the field investigation are accompanied by the chairman. Check the equipment available for rent from department. Participate in graduation exhibitions and help prepare and finish. All matters should be reported to the professor.



Rule : Can not leave the Graduation Exhibition Committee three months before Exhibition. The secretary must clearly record the payment details. Always make sure the reporting system and work responsibly and faithfully.

Blue Book Publishing Committee

Organization : Editor in chief (professor) / 2 editors (teaching assistant) / 3 supporters (students union member)

Activity : Collects student's needs and opinions, policies of the university headquarters and update the Blue Book every year.

Distribution : Distribute PDF file to all department students in freshmen orientation and link to department website.

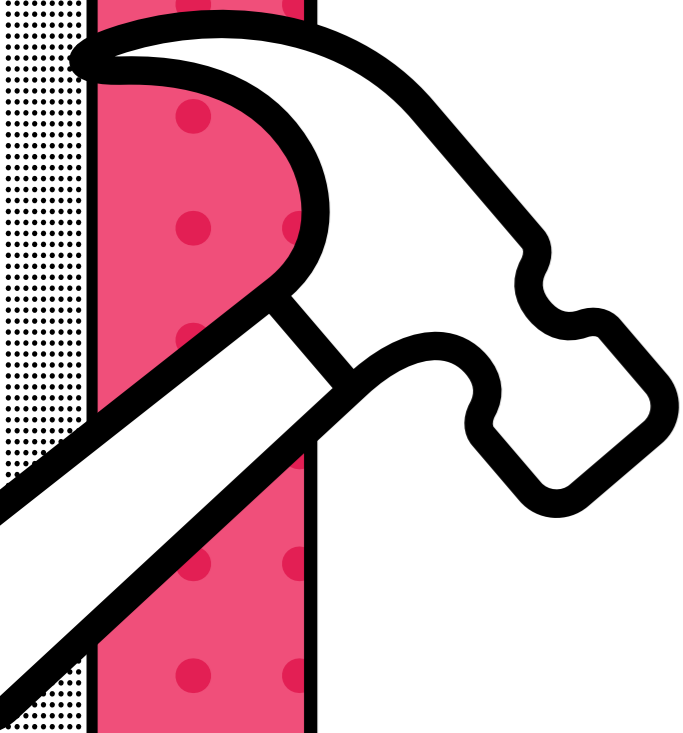


Circle Activities

Application and Subscription : To apply for a circle, fill out the application form within the application period. Promotion posters can be attached to the bulletin board during the March / September publicity period. If the circle register a student as a member without consent, the circle may be subject to warning and activity restrictions.

Activity : It is available after class room rental approval, regardless of semester and vacation period. If the circle wants to organize exhibition, make sure available space and time. Because voluntary participation is important in circle activities, there may be warnings and activity restrictions on the circles when compulsory and false activities are found. If there is a space or equipments you want to use, book in Edward system a week in advance.





**ACT
BIG!**

Campus Life

4

- 34 Faculty Facilities
- 35 Department Equipments
- 36 Certificate Issuance
- 37 Public Transpot & Parking
- 38 Disaster Evacuation



FACULTY FACILITIES

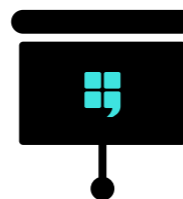
Access to Building

Opening Hours : AM 06:00 to PM 24 : 00
On weekends and public holidays, you need to fill out the entry card placed in front of the entrance.



Lecture Room Usage Rules

- When using a computer, do not install programs other programs
- Install software under the approval of the teaching assistant
- Take responsibility for the unauthorized installation of software.
- No food or alcohol in the classroom .
- After using the classroom, turn off all the electricity and leave.
- If rendering takes a long time, proceed with the approval of the TA.



Computer Room for Rent

- Application for renting after PM 6 : 00
- Minimum of 5 people
- Book to the EDWARD system one week before the desired date of use, Final approval is obtained, fill out the rental form and use the space. (Make a list of actual users when writing information)
- Stay at least 2 people in the space (go out for dinner or toilet etc.)
- When the equipments are lost or damaged, actual users take full responsibility.



Library

If you have a student ID card, you can access & borrow materials.

Opening Hours :

- During the Semester :
Week days 09 : 00 to 22 : 00 / Saturday 09 : 00 to 13 : 00
- During the Vacation :
Week days 09 : 30 to 17 : 00 / Saturday (Closed)
- Closed : Sunday, Bank Holidays, Keimyung Foundation Day (May 20)

Number of Loans and Period :

Only 10 books for up to 14 days, can extened only once



DEPARTMENT EQUIPMENTS

Usage procedure

All equipments are property of department and students. It is necessary to pay special attention when using it. In case of breakage or loss after rental, borrower takes full responsibility.

⚠ Reservation required / Breakage, lost note / Return on time

▶ Check which equipment items can be borrowed

- You need to check whether you are eligible to rent by items (It depends on teaching assistant's decision by grade, proficiency level)
- Limit on simultaneous rental of up to 2 items per person
- Long-term rental possible with the approval of professor at the time of graduation work production

▶ Visit the department office to apply and collect equipment

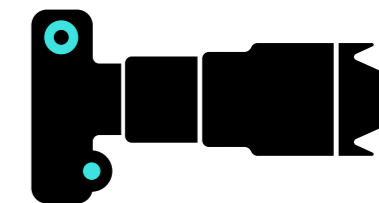
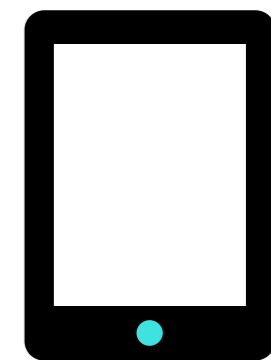
- Complete rental documents in the department office
- Confirm whether there is any abnormality of equipment with TA
- Collect equipment

▶ Use of equipment

- Failure after the removal of equipment is regarded as a student fault
- All costs of repair are covered by the student
- The rental period is 2 nights and 3 days (Exceptions : Thursday Return on Friday / Friday Return on Mondays)
- In case of holidays and campus event, coordinate with the teaching assistant.

▶ Equipment Return

- Return Time : Before PM 4:00 (Week days)
- Be sure to return the borrower. No substitute rental or return
- When returning, Check abnormality with teaching assistant





CERTIFICATE ISSUANCE

Student ID

Application and Issuance procedure is below :

E EDWARD System >> Academic Administration >> Student Support >> Student ID >> Application

Period of Issuance : 1 to 2 weeks



Issuance of Transcripts

If you want to get a transcript, your academic record, you can get it following way.

E EDWARD System >> Academic Administration >> Certificate >> Certificate Management

or you can visit Administration Team in College office to get issued.

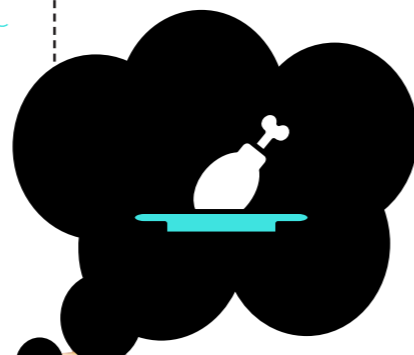


Certificate of enrollment

You can get a certificate of enrollment following way.

E EDWARD System >> Academic Administration >> Certificate >> Certificate Management

or you can visit Administration Team in College office to get issued.



PUBLIC TRANSPORT & PARKING

Public Transport near Campus

The public transport near Daemyung campus is as follows.

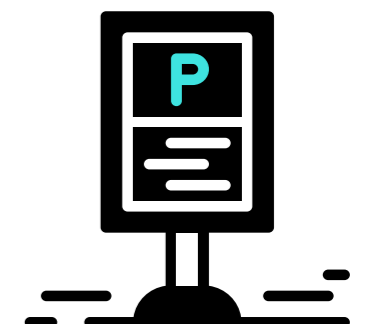
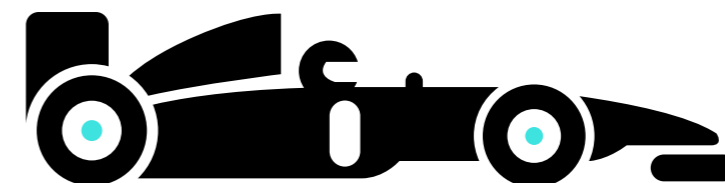
Starting point	Types of Transport	Destination
Central Daegu	B 2, 2-1, 518, 609, 650, 706, 808, 836	Daemyung Campus
	M Myungdeok [line 1] Namsan [line 3]	
Dong Daegu Station	B 2, 2-1	
	M Dong Daegu [line 1] Myungdeok [line 1]	
Daegu Station	B 808, 706	
	M Daegu Station [1호선] → Namsan [line 3]	
Dong Daegu Terminal	B 2, 2-1, 805, 650	
	M Dong Daegu [line 1]	
Seobu Station	B 609, 650, 836, 706, 805	
	M Seongdangmot [line 1]	
Dongbu Station	B 2, 2-1, 805, 650	
	M Dong Daegu [line 1]	
Bukbu	M Joongangro [line 1]	

B : Bus **M** : Daegu Metro



Parking on Campus

- You can apply for a parking permit in the beginning of the semester.
- You can park at only designated space.





DISASTER EVACUATION

Emergency Notification

In case of emergency, communicate through the system.
Department Office >> Student Representatives >> All students

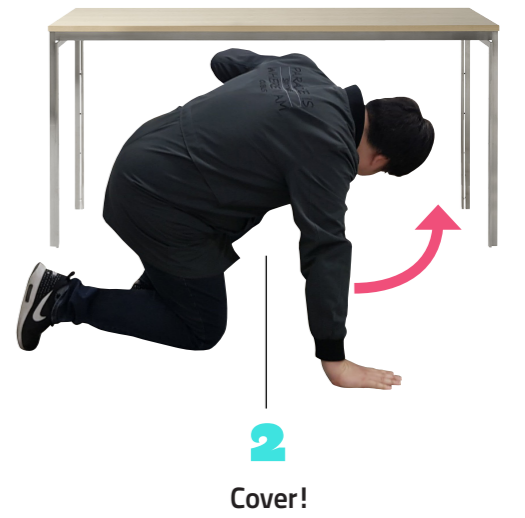
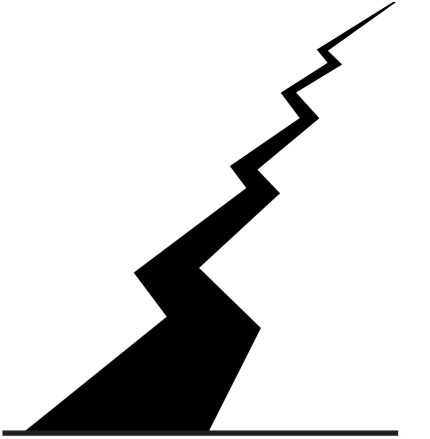
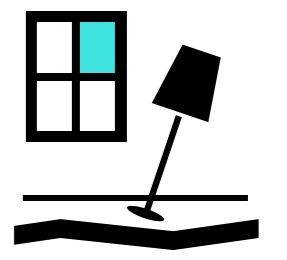
Fire Evacuation

- Activate a fire alarm.
- If you cannot go downstairs, go onto rooftop.
- Cover your face and body with a wet blanket or towel.
- If door knob is too hot to turn, do not open it. Find another way.
- Once you evacuate, do not go into the building again.
- After evacuation, wait for rescue at the windward side.



In Case of Earthquake

- DROP to the ground; take COVER by getting under a sturdy table or other piece of furniture; and HOLD ON until the shaking stops. If there isn't a table or desk near you, cover your face and head with your arms and crouch in an inside corner of the building.
- Stay away from glass, windows, outside doors and walls, and anything that could fall, such as lighting fixtures or furniture.
- Stay in bed if you are there when the earthquake strikes. Hold on and protect your head with a pillow, unless you are under a heavy light fixture that could fall. In that case, move to the nearest safe place.
- Do not use a doorway except if you know it is a strongly supported, load-bearing doorway and it is close to you. Many inside doorways are lightly constructed and do not offer protection.
- Stay inside until the shaking stops and it is safe to go outside. Do not exit a building during the shaking. Research has shown that most injuries occur when people inside buildings attempt to move to a different location inside the building or try to leave.
- DO NOT use the elevators.





**AIM
BIG!**

Useful Information

5

42

How To Graduate Easily

44

Contacts



HOW TO GRADUATE EASILY

How to get A+ Grade Without Attending the Class?



Joo Sung Park
Alumni

I've never,
ever been
absence ~~

How to Graduate Without Major Participation?



Yeon Jee Jung Alumni

I'm not sure,
you should
find a way~

How to graduate without academic endeavors?

Are you
@*@*ing
crazy?



Hwan Seok Choi Alumni

How to graduate without a graduation exhibition?

NO PAIN!
NO GAIN!
Got it?



Sam Young Kim Alumni



CONTACTS

Department Office

105 - 1, Adams Building **T** 053-620-2383

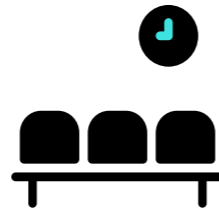
Administrative Assistant : Lecture, space rental and general administration

Teaching Assistant : Equipment rental, lecture room rental, Software etc.

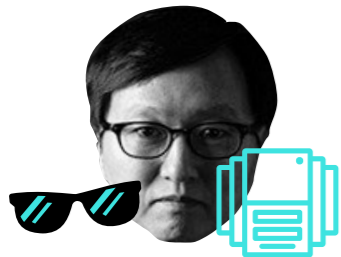


College of Fine Arts Office

Administration **T** 053-620-2122 / Finance Tea **T** 053- 580-6134

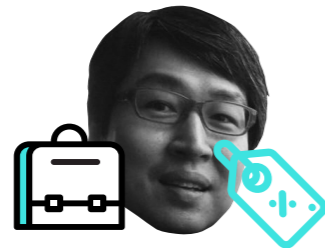


Professor Office



Han, Sang-man Course Director

311 Baure Bldg. **T** 053-620-2356



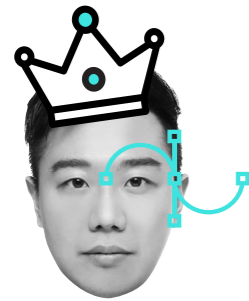
Hwang, Hyun Taik

401 Baure Bldg. **T** 053-620-2365



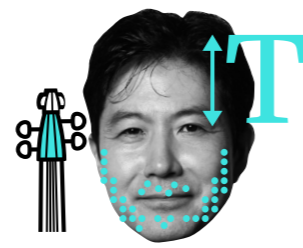
Rheem, Hun Woo

404 Baure Bldg. **T** 053-620-2384



Jang, Soon Kyu

312 Baure Bldg. **T** 053-620-2387

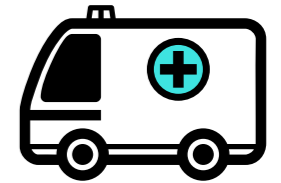


Lee, Keun Hyung

407 Baure Bldg. **T** 053-620-2364

Hospitals near Daemyung Campus

- 1 Nelpooreun Hospital **T** 053-431-1234
- 2 Samgakji Hospital **T** 053-624-7114
- 3 Choi Dentist **T** 053-622-2875
- 4 Hanjoong Detist **T** 053-624-5622
- 5 Namdaegu Hostital **T** 053-471-0119
- 6 Lee Obstetrics **T** 053-426-7525
- 7 D Otolar yngologist **T** 053-254-0862
- 8 Sin Korean Medicine **T** 053-295-8275



Useful Contacts

- Bakse Pharmacy **T** 053-651-5500
- Dong pharmacy **T** 053-654-8275
- Post Office 1 **T** 053-253-6423
- Post Office 2 **T** 053-622-0017
- Homi Atelier **T** 053-622-3749
- Kei Dae Copy **T** 053-651-8906
- Keirim Copy **T** 053-624-5604
- Hansin Copy **T** 053-585-3999
- Woori Copy **T** 053-624-8824
- Hardware store **T** 053-622-4847
- Toll & House **T** 1688-8509
- Police office **T** 053-650-2302

Design Magazines

- Eye Magazine **W** www.eyemagazine.com
- Idea Magazine **W** www.idea-mag.com
- Creative Review **W** www.creativereview.co.uk
- Communication Arts **W** www.commarts.comk
- How Design **W** www.howdesign.com
- Print Magazine **W** www.printmag.com
- Juxtapoz Magazine **W** www.juxtapoz.com
- Slanted Magazine **W** www.slanted.de
- CMYK Magazine **W** www.cmykmag.com

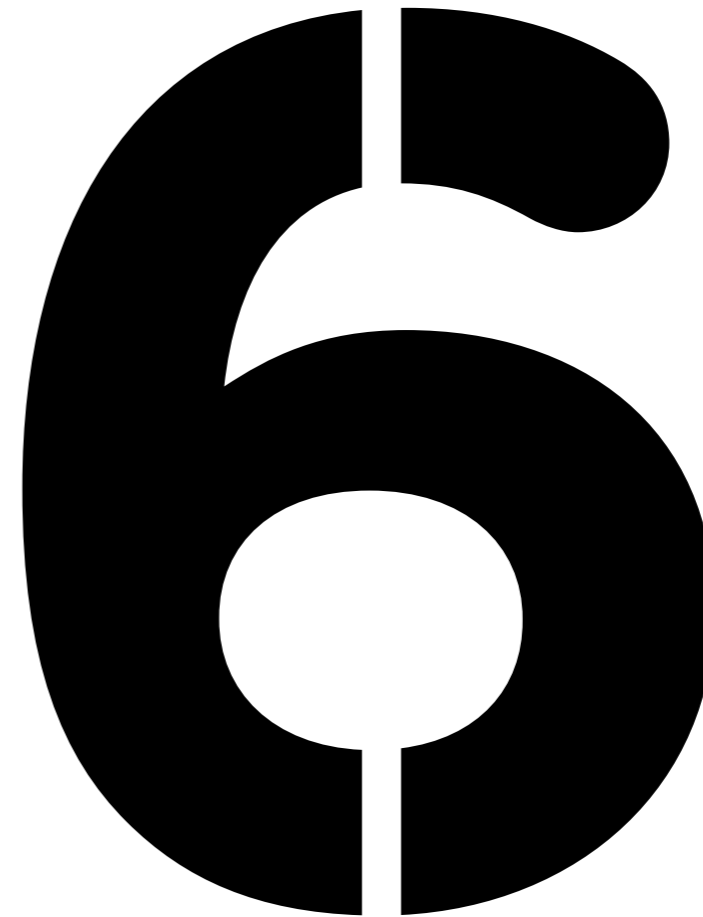


Wanna know
what it means? Go to
49 p!

DURA LEX SED LEX



Policy & Regulation



48

Policy & Regulation

50

Academic Calendar



POLICY & REGULATION

Code of Conduct

All students of Keimyung university are important members of Keimyung community, active and cooperative, respect for diversity of creative individuals and pursue a community of adults built with a sense of responsibility.

Equality & Equal Opportunity

All students will equally receive opportunities for learning regardless of gender, race, religion, sexual orientation, disability, etc. We pursue equality by giving preferential treatment to social minorities.

Restrictions on Discrimination & Ostracization

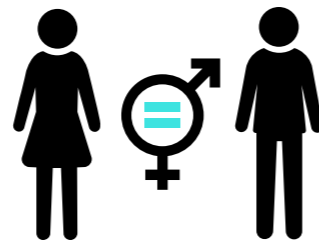
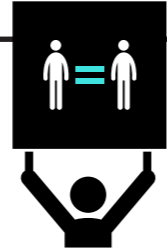
Our university does not discriminate against or ostracize students based on gender, race, religion, sexual orientation, disability, etc. Discrimination or Ostracization may result in an imposition of administrative sanction.

Sexual Discrimination / Harrassment

- Our university does not discriminate against a certain gender and our gender equally strictly protected by law. Discrimination would cause administrative punishment.
- No sexual, psychological/physical harassment, violence and stalking are banned and any attempt will cause administrative punishment.
- Victims and those who are concerned about sexual harassment and discrimination need to report and should seek a counseling.

Plagiarism

- Plagiarism is the use of another's work (sound, music, images, text, etc.) without permission of the owner (there is a non-commercial educational use exception)
- Our university prohibits plagiarism. Besides being penalized for academic dishonesty, legal consequences and liability may be resulted.



Alcohol & Drug

No alcohol or drug is allowed on campus. The administrative punishment may be applied to violators.

Smoking

Smoking is allowed only in the designated area. Smoking in non-designated smoking area may cause administrative punishment.

Restricted Items

No dangerous items are allowed in campus. (ex. explosive material, volatile liquid, etc.) regardless if intended uses. Consult the department office if you are not sure about the dangerousness of an item.

Internet Use Rules & Procedures

- The wired / wireless internet available on campus may be used only to search and store contents for studying.
- Rules applicable to all devices that can access the internet, such as a public computer, a personal computer or a personal smartphone.
- External data can only be transmitted via USB and CD



46p answer



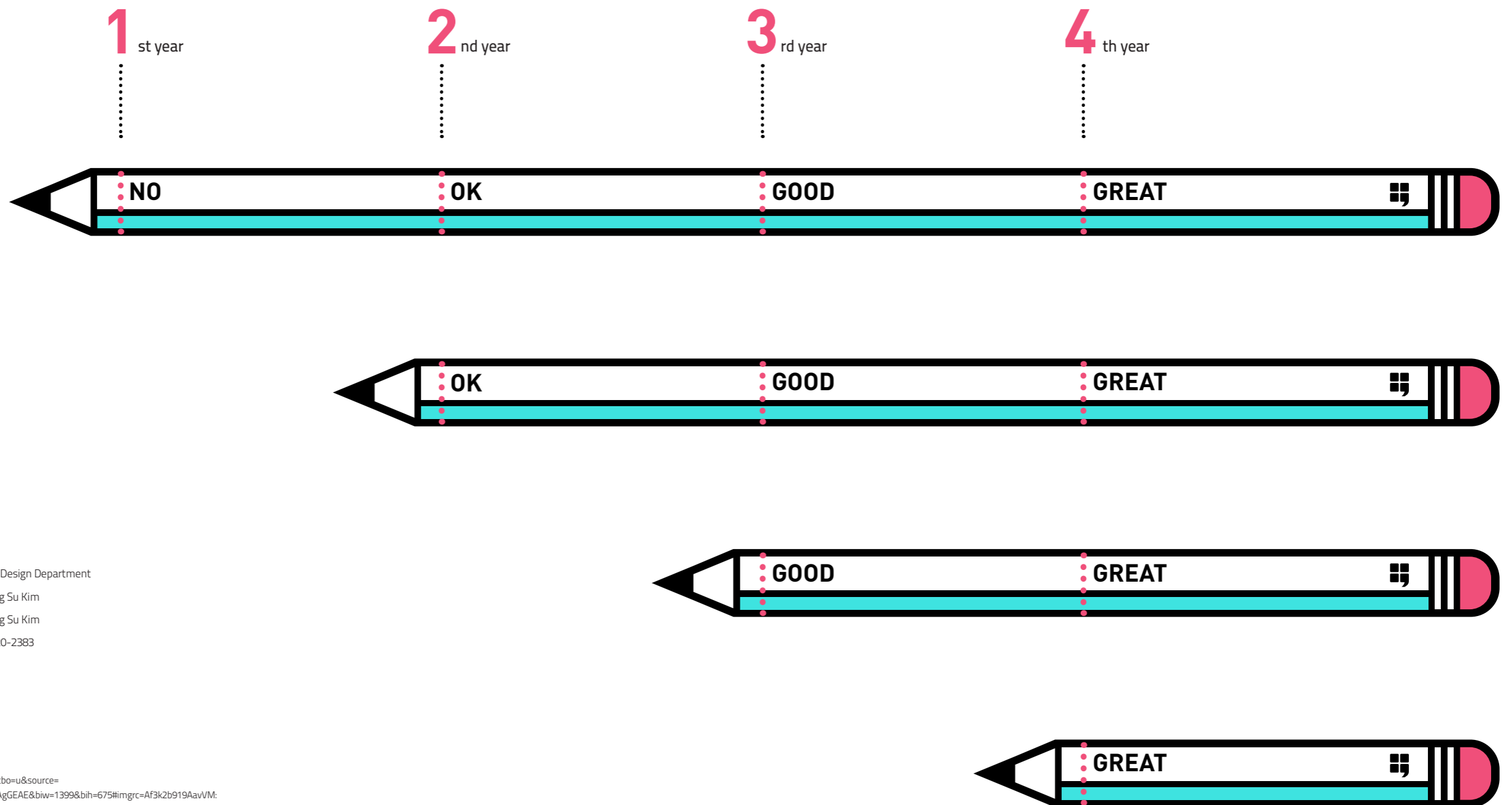
DURA LEX, SED LEX

The law may be hard to observe or difficult to obey, but it remains the law and must be therefore followed just the same. This is the plain and simple meaning and implication of the above cited Latin maxim which is well known in a special way by the legal profession.

PRACTICE MAKES PERFECT!

**Practice only makes perfect
if you make
progress.**

- Sir John Hegarty -



Publishing | Keimyung University Visual Communication Design Department

Design | Jin Yong Kim, Dong Woo Lee, Sung Jun Kim, Sang Su Kim

Editing | Jin Yong Kim, Dong Woo Lee, Sung Jun Kim, Sang Su Kim

Contact | Blue Book Publishing Committee Phone 053-620-2383

Image Source :

Icon www.thenounproject.com

12, 14, 16, 17, 18, 19, 20, 24, 25, 28, 29, 33, 34, 47p photography

<https://www.google.com/search?q=people+lying+png&tbm=isch&tbo=u&source=univ&sa=X&ved=2ahUKEwjeisJok3eAhWJwrwKHc4VD-MQsAR6BAgGEAE&biw=1399&bih=675#imgrc=Af3k2b919AavVM>

Image of these pages are from Sir John Hearty's book 'Hegarty on Creativity'. We carefully regenerate it.